

## Solar panel battery storage system

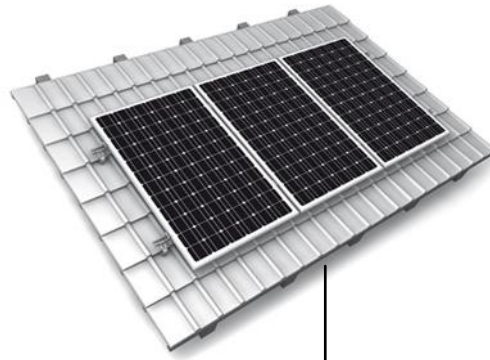
- Ideal for retro fitting existing solar panel installations
- We can provide for new build solar panel installations
- Inverter can be installed to divert generated power into battery storage for convenient self consumption use when required
- *Equipment supply services include*
- *Solax inverter sizes: SU3700e or SU5000e*
- *Solax batteries sizes: 3.3kWh or 6.5kWh*
- *Solar panels: Q Cells 295w or 325w*
- *Solar fixings: to suit any roof*
- *Switches, cables and ancillaries available*

*Our team will be happy to talk with you to identify your needs.*

*Please contact us either by phone or email to discuss any issues.*

[info@solardragons.co.uk](mailto:info@solardragons.co.uk)

telephone: 01646 600151



# DRAGONS BREATH

*Solar Panel Battery Storage Systems*

*Tel 01646 600151*

[\*info@solardragons.co.uk\*](mailto:info@solardragons.co.uk)

