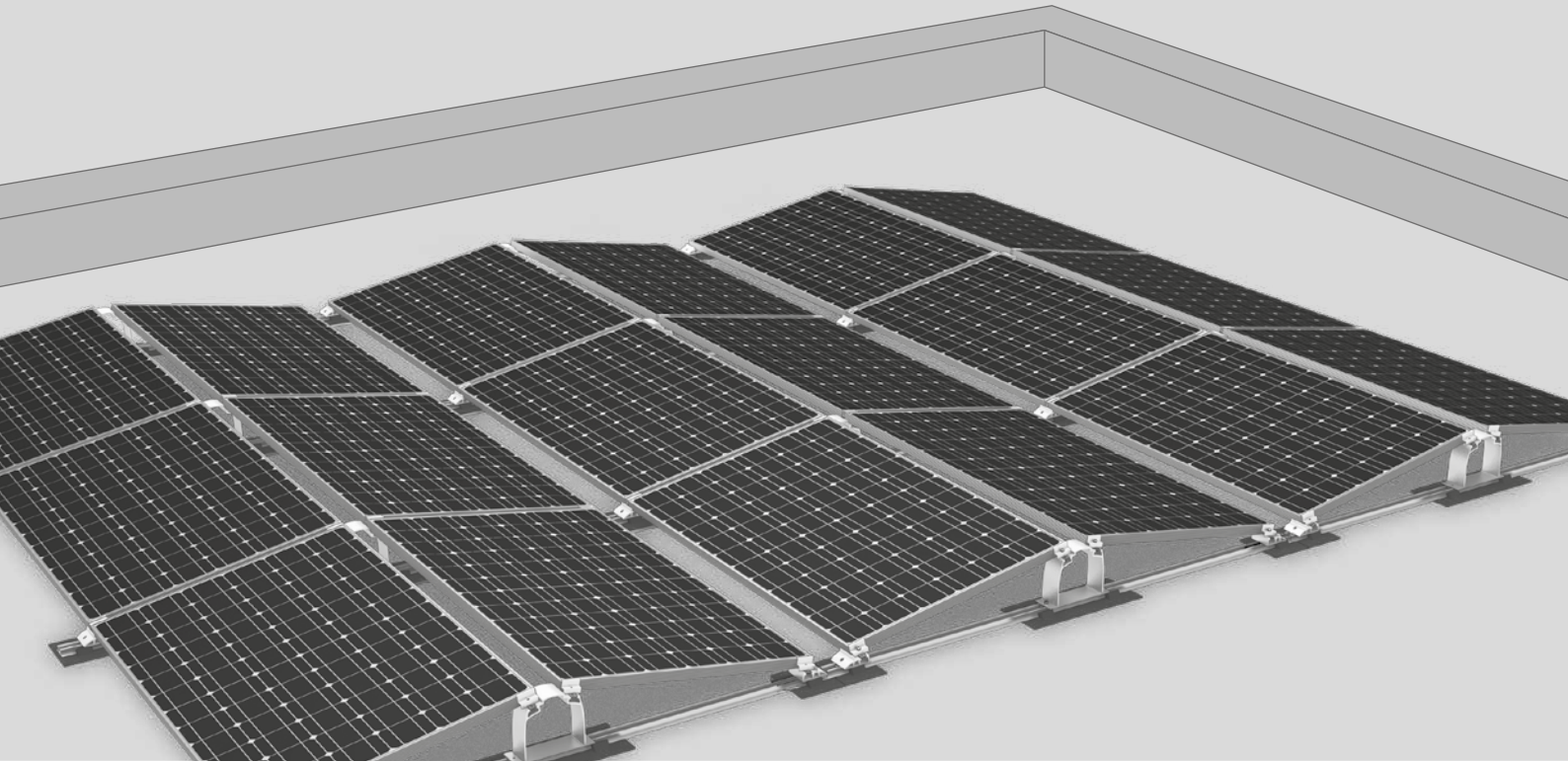


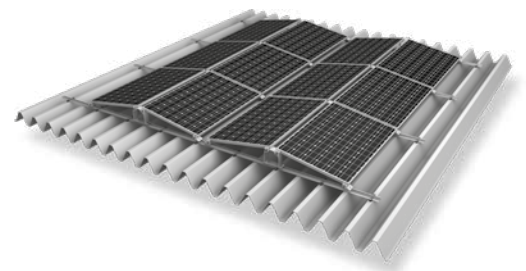


D-Dome 10° System

The solution for double-sided elevation

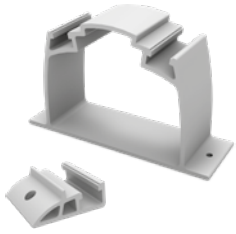


- ▶ A system which provides optimal surface utilisation and yields for roofs with limited ballasting options
- ▶ Aerodynamically optimised as a result of wind tunnel testing
- ▶ Quick and easy handling



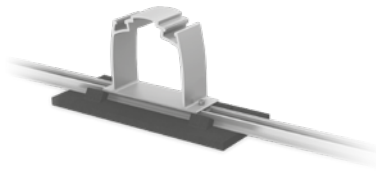
D-Dome can also be mounted on trapezoidal sheet metal roofs.

Components



Dome D1000 and Dome SD

Narrow elevation module support element for two-sided elevations



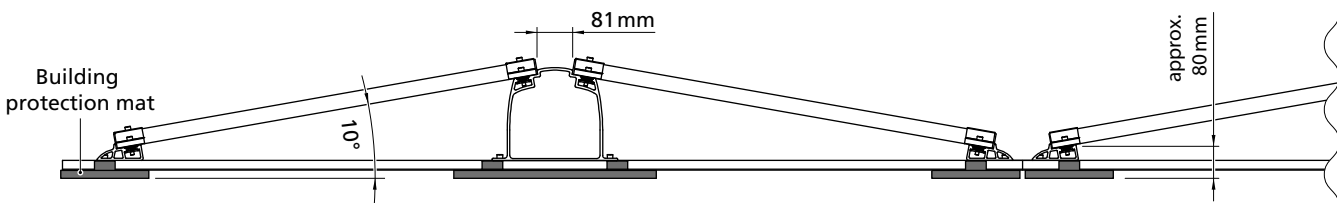
SpeedRail with building protection mats

- ▶ SpeedRail available as short or long rails
- ▶ Building protection mats also laminated with aluminium



Ballast Management

SpeedPorter: For quick and easy ballasting



Technical data

	D-Dome
Scope of application	Flat roofs $\leq 5^\circ$ with single ply membrane or bituminous roof covering, also on concrete, gravelled or green roofs; also trapezoidal sheet metal roofs with continuous mounting rails
Fastening type/roof fixture	Ballasted; no roof penetration for inclination $\leq 3^\circ$
Requirements	<ul style="list-style-type: none"> ▶ Permissible module dimensions (L x W x H): 1386-2080 x 950-1100 x 30-50 mm ▶ Minimum system size: 2 supports (4 modules) ▶ Module approved for corner clamping (see k2-systems.com/en/approved-modules)
Technical specifications	<ul style="list-style-type: none"> ▶ Thermal separation after max. 11 m (trapezoidal sheet metal 8.4 m) ▶ Minimum clearance to roof edge 600 mm
Inclination angle	10°
Material	<ul style="list-style-type: none"> ▶ Mounting rails, D-Dome, Dome SD, Module Clamps, Rail Connectors: Aluminium EN AW-6063 T66 ▶ Building protection mat with or without aluminium lining (PUR-bound rubber granules) ▶ Small parts: Stainless steel (1.4301) A2-70